



## CASE STUDY

# Laying of heating mats – football stadium, Prostějov



**IMPLEMENTATION**  
24.-25. 6. 2024



**CLIENT**  
DISTRICT FOOTBALL  
ASSOCIATION PROSTĚJOV



**LOCALITY**  
PROSTĚJOV  
CZECH REPUBLIC



**FACILITY**  
SPORTS STADIUM



**PRODUCT**  
Atypical heating mats  
Ecofloor MASA 130 W/m<sup>2</sup>

**IMPLEMENTATION** 24.–25. 6. 2024

**CLIENT** District Football Association Prostějov

**LOCALITY** Prostějov, Czech Republic

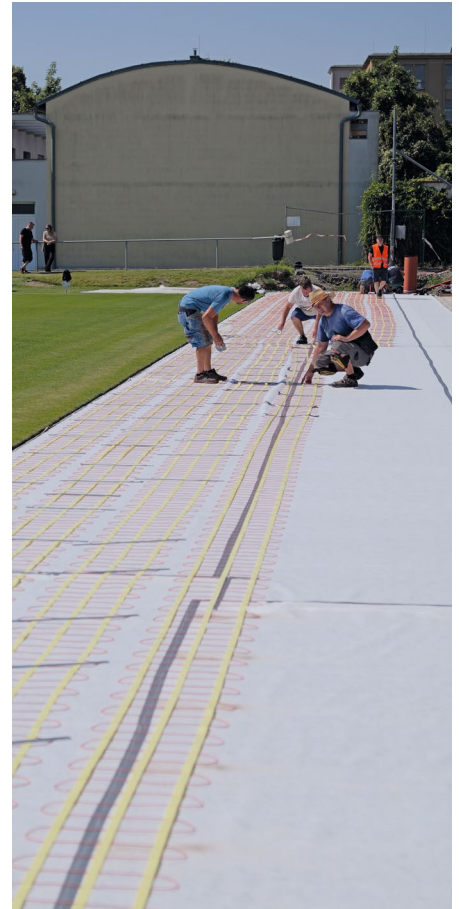
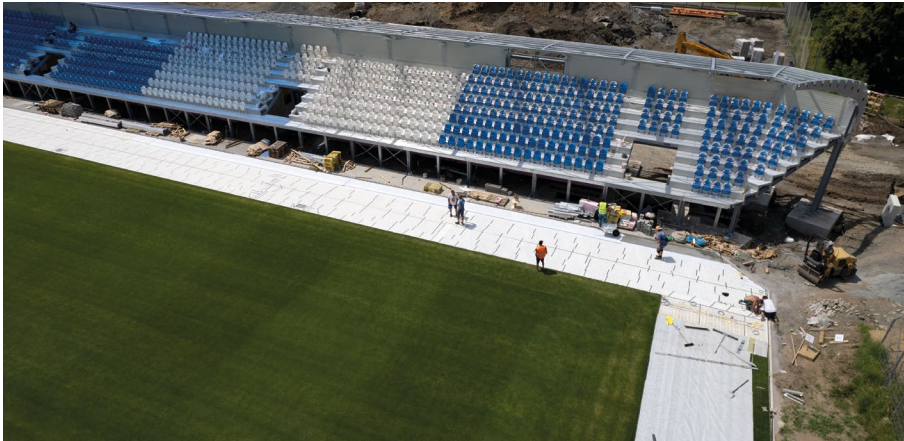
**FACILITY TYPE** Sportovní stadion

**BUDGET** CZK 690 000 excl. VAT (heating mats)

**VENDOR** SPORT Construction a. s.

**PRODUCT**

Atypical heating mats Ecofloor MASA 130 W/m<sup>2</sup>, regulation based on outdoor temperature with humidity sensing on protected area



## PROJECT DESCRIPTION

The reason for implementation was the need to enlarge heated area of the stadium. The existing heating system is installed into the main playing field (area of 7 244 m<sup>2</sup>) and it has only minimum overlap to run-offs. Operating practice has shown that even the run-offs need to be heated, where connection to the existing heating system was infeasible without complete (therefore very expensive) reconstruction. Within the planned reconstruction of playing field, new artificial grass of the 3rd generation was laid onto the run-off areas and significantly easier and cheaper solution in the form of electric heating mats was chosen for its heating.

Heating elements are atypical [Ecofloor MASA 130 W/m<sup>2</sup>](#), heating mats, operation of which is regulated depending on the outdoor temperature and humidity. The area of run-offs heated by the Ecofloor heating mats is 1 637 m<sup>2</sup> and total power of 41 heating mats is 164.5 kW. Implementation was accomplished by SPORT Construction a. s., Kroměříž.

The purchase cost was approximately CZK 690 000, VAT excluded (price of heating mats with regulation). Operating costs depend not only on the price of electricity but also on the weather in combination with the frequency of utilization of the playing field. To simplify it, we can calculate that an hour of continuous operation means the consumption of 165 kWh. With the price of, e.g. CZK 6 for 1 kWh, it is CZK 990 per hour.

→ More informations



[www.fenixgroup.cz](http://www.fenixgroup.cz) • Slezská 2, 790 01 Jeseník • phone: 584 495 111, 584 495 441 • e-mail: [fenix@fenixgroup.cz](mailto:fenix@fenixgroup.cz)